



# Venue info – Sound and Lights

Updated for 2024

## Contents:

- 1: CONTACT INFO
- 2: GENERAL INFO
- 3: SOUND
- 4: LIGHTS
- 5: LIGHT PLOT
- 6: STAGE PLOT
- 7: PYRO
- 8: LED-SCREEN

## 1: CONTACT INFO

---

### **In-House Sound Tech**

Jørgen Johansen tel. +47 478 39 859 // [jorgen@focuspro.no](mailto:jorgen@focuspro.no)

### **In-House Light Tech**

Rune Langaard tel. +47 459 07 922 // [rune@focuspro.no](mailto:rune@focuspro.no)



## 2: GENERAL INFO

### Load in:

Access from street. 5m push **Get in not before 13:00**

Load in door dimensions - 2m high, 1,25m wide

### Stage:

10x8m

Side stage Production area

SR approx. 2m x 3,5m

FOH: 20m from stage, roof cover

## 3: SOUND

### SPL limitations:

*Hard SPL limitations for this venue is LAeq 99dB @ 30 min*

*Recommendation is LAeq 96dB @ 30 min*

The SPL measurements will be taken at FOH

### **ATTENTION!**

Foynhagen is in a listed block of flats with nearby neighbors. This entails strict regulations from the authorities. This means that soundcheck must be done via in-ears where this is possible. Sound out of the PA is limited to a maximum of 15 min.

**PA:**

8 x d&b audiotechnik XSL per side

4 x d&b audiotechnik SL-SUB - Line config underneath stage floor

*Left-Right feed on stage left, stage right or FOH*

**Monitor:**

12 x Martin Audio LE100

8ch Martin Audio MA5.0Q amplifiers

**FOH:**

Midas Pro2C

Midas DL251 // 48in/16out

**Microphones and DI:**

10 X Shure Beta 58A

5 X Shure SM 58

12 X Shure SM 57

1 X Shure Beta 91A

1 X Shure Beta 52A

4 X Sennheiser E 904

6 X Sennheiser e914

4 X Switchcraft SC702CT Stereo DI

8 X Switchcraft SC800A Active DI

4 X Switchcraft SC900CT Passive DI

**Stands:**

18 X K&M 210/4B tripod legs tall stand incl. boom arm

6 X K&M 260/1B Round base tall stand incl. boom

10 X K&M 233/1B Round base small stand incl. boom

Complete package of mic cables, speaker cables and remote boxes

**Wireless:**

Wireless systems can be added at the expense of the artist

Shure ULX-D w/ Beta 58 HH or belt pack for instruments or similar

Shure PSM 900/1000 IEM or similar

Contact In-House Sound tech for pricing



## 4: LIGHTS

Foyenhagen has available a standard light package for your use  
The light is set up in a standard configuration and is considered pertinent  
If there is a desire to change the layout, this must be notified in good time  
before your arrival. Costs for reversal and any additional equipment  
requirements will be added.

### **FOH:**

Grand Ma3 Light - 4096 parameters in MA2 Mode (8192 in MA3 Mode)

### **Moving fixtures:**

8 x Martin Mac Quantum Profile

18 x Martin Mac Aura XB

8 x Martin Rush MH 7

### **Conventional:**

6 x Arri T2 2kw Fresnel p/o in front truss

### **Effects:**

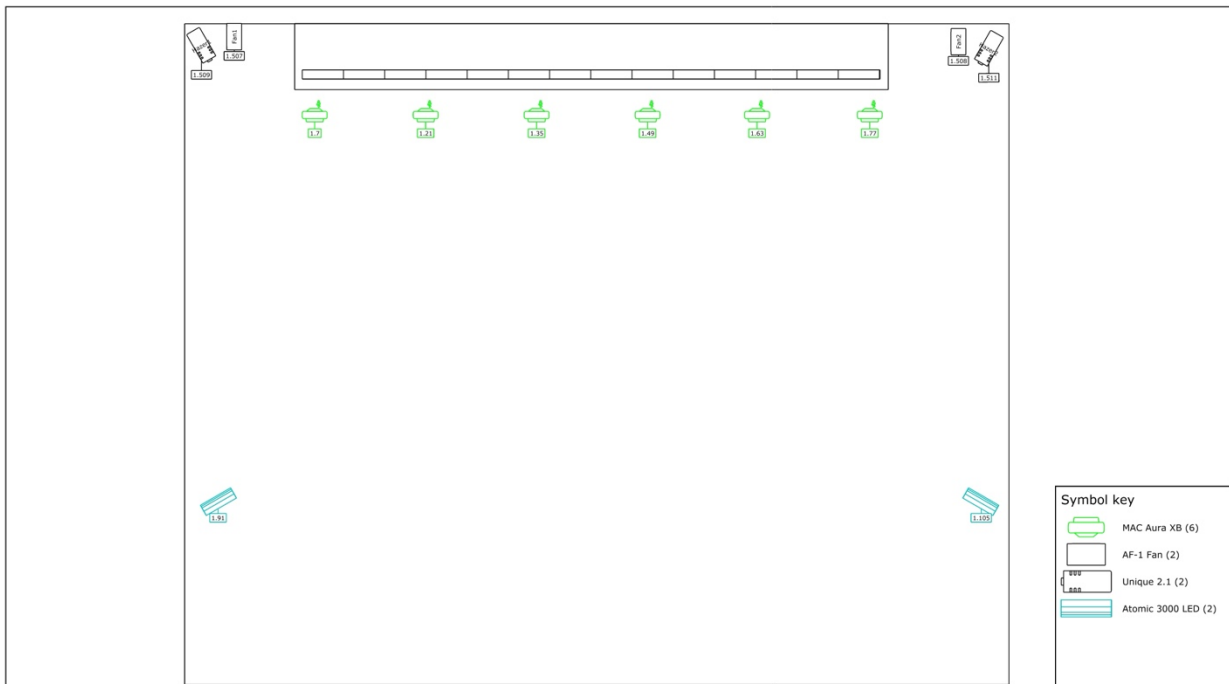
8 x Martin Atomic 3000 LED

8 x Showtec Stageblinder 2

2 x Look Unique 2.1 Hazer, 2ch

See plot for more info

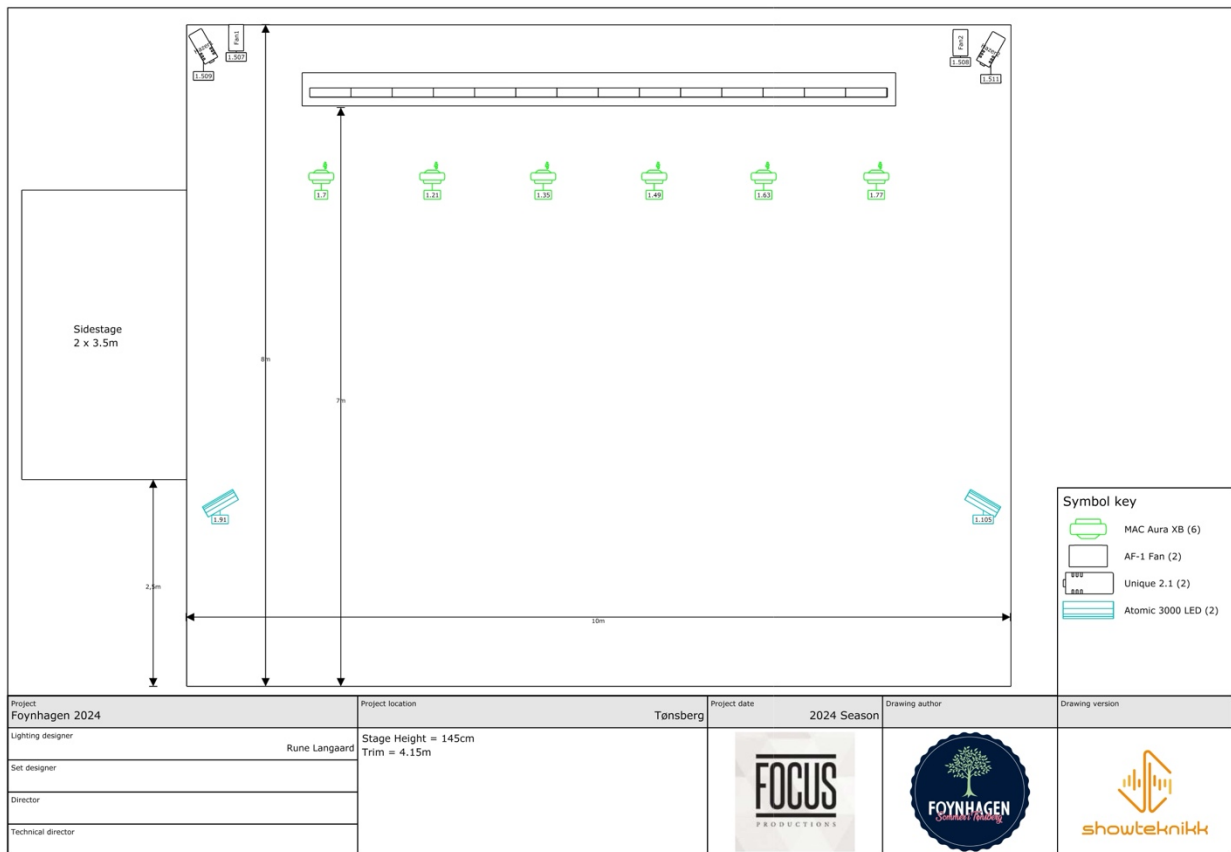




Project: <b>Foynhagen 2024</b>	Project location: <b>Tønsberg</b>	Project date: <b>2024 Season</b>	Drawing author:	Drawing version:
Lighting designer: <b>Rune Langaard</b>				
Set designer:				
Director:				
Technical director:				



# 6: STAGE PLOT







## 7: PYRO

PYRO AND/OR OPEN FLAMES ARE UNDER NO CIRCUMSTANCES ALLOWED!  
THIS IS A PROTECTION AREA WITH IRREPLACEABLE BUILDINGS!  
CONFETTI OF ANY KIND MUST BE PRE-APPROVED

## 8: LED-SCREEN

Foynhagen has an LED screen of type Martin Face5 available at the venue. This screen is not a part of the standard Foynhagen specification, however it can be used for a fee.

SCREEN WIDTH:	7m
SCREEN HEIGHT:	3.38m
HORISONTAL RESOLUTION:	1344px
VERTICAL RESOLUTION:	648px

Contact In-house techs for pricing.

